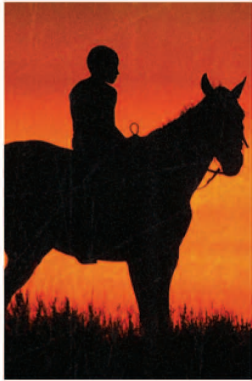


**OCTOBER**

**NOVEMBER**

**DECEMBER**



**REEL INJUN**  
by Neil Diamond  
*Reel Injun* is an entertaining trip through the evolution of North American Native people ("The Indians") as portrayed in famous Hollywood movies, from the silent era to today.

**October 21 - 6:30pm**  
Slater Auditorium, NFA  
Norwich



**DEEP DOWN**  
by Jen Gilomen and Sally Rubin  
Appalachian mountains of E. Kentucky, Beverly May and Terry Ratliff find themselves at the center of a contentious community battle over a proposed mountaintop removal coal mine.

**November 18 - 6:30pm**  
Frank Center, NFA  
Norwich



**THE CALLING**  
by Daniel Alpert  
A look at young Americans — Christian, Jewish, Catholic, & Muslim — preparing to become religious leaders, the film explores the forces drawing them to serve their communities and their faith.

**December 16 - 6:30pm**  
Frank Center, NFA  
Norwich

**JANUARY**

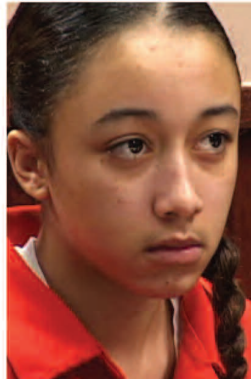
**FEBRUARY**

**MARCH**



**FOR ONCE IN MY LIFE**  
by Jim Bigham and Mark Moormann  
28 musicians and singers with severe mental & physical disabilities, the Spirit of Goodwill Band challenges the meaning of being disabled.

**January 20 - 6:30pm**  
Frank Center, NFA  
Norwich



**ME FACING LIFE: Cyntoia's Story**  
by Daniel H. Birman  
Story of a woman serving a life sentence for murder at the age of 16 challenges our assumptions about violence & explores how factors such as biology & family history can doom some young people.

**February 17 - 6:30pm**  
Frank Center, NFA  
Norwich



**PUSHING THE ELEPHANT**  
by Beth Davenport and Elizabeth Mandel  
Captures

one of the most important stories of our age, in which genocidal violence is challenged by the moral fortitude & grace of a woman's mission for peace.  
**March 17 - 6:30pm**

**APRIL**

**MAY**

**JUNE**



**BHUTTO**  
by Duane Baughman  
One of the most fascinating & important world leaders of our time, Benazir Bhutto. As the 1st woman Islamic national leader, her life story unfolds like a tale of Shakespearean dimensions.

**April 14 - 6:30pm**  
Frank Center, NFA  
Norwich



**WELCOME TO SHELBYVILLE**  
by Kim Snyder  
On the eve of the 2008 election, the town of Shelbyville, Tennessee finds itself embroiled in a struggle to come to terms with a new wave of immigrants and grappling with what it means to be American.  
**May 19 - 6:30pm**  
Frank Center, NFA  
Norwich



**TWO SPIRITS**  
by Lydia Nibley  
Fred Martinez was one of the youngest hate-crime victims in modern history when he was brutally murdered at 16. *Two Spirits* explores the life & death of a boy who was also a girl, & the essentially spiritual nature of gender.  
**June 16 - 6:30pm**  
Donald L. Oat Theater  
Norwich

Community Cinema is a groundbreaking public education and civic engagement initiative featuring monthly screenings of films from the Emmy Award-winning PBS series *Independent Lens*. Every month between September and May, Community Cinema brings together leading organizations, community members and public television stations to learn, discuss and get involved in today's critical social issues. **For more information about Community Cinema, visit <http://communitycinema.org/>**

To receive information about Norwich Community Cinema events, please sign up for our e-blasts. Dates are subject to change so please check our website: [norwichcinema.org](http://norwichcinema.org).



PRESENTED BY:



**OCTOBER**



**REEL INJUN**

by Neil Diamond  
*Reel Injun* is an entertaining trip through the evolution of North American Native people ("The Indians") as portrayed in famous Hollywood movies, from the silent era to today.

October 21 - 6:30pm  
Frank Center, NFA  
Norwich

**NOVEMBER**



**DEEP DOWN**

by Jen Gilomen and Sally Rubin  
Appalachian mountains of E. Kentucky, Beverly May and Terry Ratliff find themselves at the center of a contentious community battle over a proposed mountaintop removal coal mine.

November 18 - 6:30pm  
Frank Center, NFA  
Norwich

**DECEMBER**



**THE CALLING**

by Daniel Alpert  
A look at young Americans — Christian, Jewish, Catholic, & Muslim — preparing to become religious leaders, the film explores the forces drawing them to serve their communities and their faith.

December 16 - 6:30pm  
Frank Center, NFA  
Norwich

**JANUARY**



**FOR ONCE IN MY LIFE**

by Jim Bigham and Mark Moormann  
28 musicians and singers with severe mental & physical disabilities, the Spirit of Goodwill Band challenges the meaning of being disabled.

January 20 - 6:30pm  
Frank Center, NFA  
Norwich

**FEBRUARY**



**ME FACING LIFE:**

*Cyntoia's Story*  
by Daniel H. Birman  
Story of a woman serving a life sentence for murder at the age of 16 challenges our assumptions about violence & explores how factors such as biology & family history can doom some young people.

February 17 - 6:30pm  
Frank Center, NFA  
Norwich

**MARCH**



**PUSHING THE ELEPHANT**

by Beth Davenport and Elizabeth Mandel  
Captures one of the most important stories of our age, in which genocidal violence is challenged by the moral fortitude & grace of a woman's mission for peace.

March 17 - 6:30pm  
Frank Center, NFA  
Norwich

**APRIL**



**BHUTTO**

by Duane Baughman  
One of the most fascinating & important world leaders of our time, Benazir Bhutto. As the 1st woman Islamic national leader, her life story unfolds like a tale of Shakespearean dimensions.

April 14 - 6:30pm  
Frank Center, NFA  
Norwich

**MAY**



**WELCOME TO SHELBYVILLE**

by Kim Snyder  
On the eve of the 2008 election, the town of Shelbyville, Tennessee finds itself embroiled in a struggle to come to terms with a new wave of immigrants and grappling with what it means to be American.

May 19 - 6:30pm  
Frank Center, NFA  
Norwich

**JUNE**



**TWO SPIRITS**

by Lydia Nibley  
Fred Martinez was one of the youngest hate-crime victims in modern history when he was brutally murdered at 16. *Two Spirits* explores the life & death of a boy who was also a girl, & the essentially spiritual nature of gender.

June 16 - 6:30pm  
Frank Center, NFA  
Norwich

Community Cinema is a groundbreaking public education and civic engagement initiative featuring monthly screenings of films from the Emmy Award-winning PBS series *Independent Lens*. Every month between September and May, Community Cinema brings together leading organizations, community members and public television stations to learn, discuss and get involved in today's critical social issues. **For more information about Community Cinema, visit <http://communitycinema.org/>**

To receive information about Norwich Community Cinema events, please sign up for our e-blasts. Dates are subject to change so please check our website: [norwichcinema.org](http://norwichcinema.org).

